

Flute

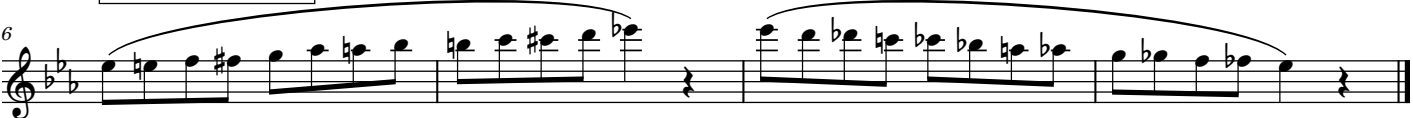
MID-YEAR ASSESSMENT

1. Scale: Concert E-Flat

Major Scale



Chromatic Scale



2. Scale: Concert C

Major Scale



Chromatic Scale



3. Rhythmic Etude

please record with a metronome set to approx. 100 BPM



Flute

4. Lyrical Study: Old Home Days

0m18s in video

Largo e sostenuto $\text{♩} = 84$

p dolce

7 *mp p mf p dolce*

15

5. Holst March (optional challenge)

This excerpt is in CUT TIME!

0m11s in video

Allegro $\text{♩} = 120$

f

7

Flute

6. Autumn Leave Solo (Chet Baker)

optional for those auditioning for Jazz Ens.

0m10s in video

lower notes opt.

6

12

Important: Due to the lack of standard literature available for jazz flute players, students auditioning on this instrument can only earn entry in Jazz Ensemble at the director's discretion.